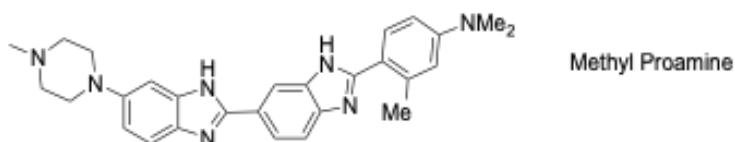


Product JW1 – Metyl Proamine**Chemical Properties**

| | |
|---------------------|---|
| CAS number | 23555-00-2 |
| Formula | C ₂₇ H ₂₉ N ₇ |
| Physical appearance | Solid |
| MW | 451.6 |
| Storage | Store at -20°C, protected from light |
| Solubility | Water, DMSO, DMF |
| Excitation | ~ 350 nm |
| Emission | ~ 460 (DNA-bound) ~530 (unbound) |
| Notes | The dyes bind to nucleic acids, with a preference for AT-rich double-stranded DNA strands. As a result of the binding, the fluorescence is enhanced considerably. The dye is cell-permeable and can bind to DNA in live or fixed cells. |